

# DRIVESAFE NT

SAFE DRIVER PROGRAM

## PARTICIPANT HANDBOOK & DRIVING LOG



**DRIVESAFE NT**



1800 121 411




DRIVESAFENT@NT.GOV.AU



WWW.DRIVESAFE.NT.GOV.AU



**NORTHERN  
TERRITORY**  
GOVERNMENT



### Contacts

For more information about the DriveSafe NT Program visit [www.drivesafe.nt.gov.au](http://www.drivesafe.nt.gov.au) or contact the DriveSafe NT team on 1800 121 411.

Level 2, Energy House, 18-20 Cavenagh St, Darwin  
GPO Box 2520, Darwin, NT 0801  
Email: [drivesafent@nt.gov.au](mailto:drivesafent@nt.gov.au)

**This DriveSafe NT Participant handbook and driving log including practical driving competencies belongs to:**

.....

If found, please return to:

.....

.....

.....

.....

My DriveSafe NT Customer ID is: .....

My learner licence number is: .....

Expiry date: .....

# CONTENTS

## USING THE HANDBOOK AND DRIVING LOG

## WHAT IS DRIVESAFE NT?

## DRIVESAFE NT PROGRAM STAGES

## CODE OF CONDUCT

## PRACTICAL DRIVING COMPETENCIES

About Practical Driving Competencies

Competency No. 1 Vehicle controls

Competency No. 2 Cabin drill

Competency No. 3 Starting up procedure

Competency No. 4 Moving off procedure

Competency No. 5 Gear changing

Competency No. 6 Steering control

Competency No. 7 Turns, left and right

Competency No. 8 Speed control

Competency No. 9 Slowing procedure

Competency No. 10 Stopping procedure

Competency No. 11 Hill starts

5 Competency No. 12 Give way rules 46

6 Competency No. 13 Reversing 48

9 Competency No. 14 Right-angle parking (front in) 50

14 Competency No. 15 Reverse parallel parking 54

22 Competency No. 16 U-turns 56

22 Competency No. 17 Turning around on the road  
(e.g. three-point turn) 58

26 Competency No. 18 Lane changing, merging,  
forming one lane 60

28 Competency No. 19 Overtaking 62

30 Competency No. 20 Observation skills, visual  
searching and scanning, hazard recognition 64

34 Competency No. 21 Compliance with the  
system of vehicle control 66

36 Competency No. 22 Driving at night 68

40 Competency No. 23 Driving on busy roads  
and unfamiliar roads 70

44 DRIVING LOG 72



## USING THE HANDBOOK AND DRIVING LOG

This book should be read by both you and your supervising driver, keep it somewhere safe and refer to it often.

It contains:

- an outline of the Practical Driving Competencies you will need to learn, practise and demonstrate to become a safe driver in preparedness to qualify for your provisional licence
- a supervised driving log where you can record time spent practising your new driving skills with fully licensed family and friends in between lessons.

Note: This DriveSafe NT Participant handbook and driving log does not contain detailed information about road rules and licensing requirements. Road rules and licensing requirements can be found in the NT Road User Handbook provided in your participant pack, online at [www.drivesafe.nt.gov.au](http://www.drivesafe.nt.gov.au) or purchased at your local Motor Vehicle Registry (MVR) office.

### *Disclaimer*

*This publication is distributed on the understanding that the Northern Territory Government, its servants and agents are not responsible for the results of actions taken on the basis of information in this publication or for any error in or omission from this publication.*

*The Northern Territory Government, its servants and agents expressly disclaim all liability to any person, whether a purchaser or reader of this publication or not, in respect of anything and the consequence of anything done or omitted to be done by any such person in reliance whether wholly or any part of the content of this publication.*

*Northern Territory Australia 2024*

# WHAT IS DRIVESAFE NT?

DriveSafe NT is a government subsidised driver education and licensing program for Territorians.

DriveSafe NT provides you with essential knowledge of road rules, safe driving practises and attitudes including subsidised professional driver training to make you safer on our roads.

## How much does DriveSafe NT cost?

The enrolment fee is \$110 and payable when you enrol through the Motor Vehicle Registry (MVR). Enrolment entitles you to more than \$600 in subsidies towards obtaining your driver licence, which includes:

- All course materials – DriveSafe NT Participant Pack.
- Classroom-based theory driver and road safety education – Drive 1 and 2 theory classes.
- Learner (L) and provisional (P) licence and testing fees.
- 10 subsidised driving lessons valued at \$50 each. This does not include vehicle hire.
- First@Scene - St John Ambulance NT online first aid course.

- Two attempts at the practical driving assessment.
- Access to online tools to track and manage your driver education.

## How do I enrol in DriveSafe NT?

You can enrol in DriveSafe NT at any Motor Vehicle Registry (MVR) office by completing a DriveSafe NT enrolment form and learner licence application form.

You must bring your evidence of identity and residency documents with you. You will need a mobile phone and/or email address to access the online tools that will assist you to self-manage your progress through the program.

A photograph and eyesight test will be completed at the MVR office. We will mail your new learner licence to you once you have passed your Driver Knowledge Test in the Drive 1 theory class.

## **What if I already have a NT learner licence?**

If you already have a learner licence you only need to complete the DriveSafe NT enrolment form and pay the enrolment fee. There will be no need to repeat the eyesight test or have your photograph taken again. Make sure you bring your current learner licence when you enrol. You will still need to attend a Drive 1 theory class.

## **How long will it take to complete DriveSafe NT?**

The DriveSafe NT program has been designed so that all elements of the program can be completed over six months in line with the current legislated minimum learner licence holding period. A learner licence is valid for two years.

DriveSafe NT participants are encouraged to take their time and get as much learning and driving practise as they can before advancing to their provisional licence and completing the program.

## **When and where do I complete my theory classes?**

Drive 1 and 2 theory classes are available after school, weekends and in a variety of locations. A schedule of upcoming classes is available at [www.drivesafe.nt.gov.au](http://www.drivesafe.nt.gov.au) and on DriveSafe NT Online after you enrol.

## **Using DriveSafe NT Online**

Your progress through DriveSafe NT is self-managed using online tools. You will be provided with access to a personalised DriveSafe NT Portal to book your theory classes, request subsidised driving lesson e-vouchers and track your progress through the program.

You can also use SMS or telephone to interact with the DriveSafe NT Portal.

## **Driver First Aid St John Ambulance NT online first aid course**

Driver First Aid is an online first aid course designed by St John Ambulance NT to teach the skills required to apply first aid at the scene of a road accident.

The course is a compulsory component of the DriveSafe NT program. It can be completed online in approximately 30 minutes. You do not need to complete Driver First Aid if you have a current first aid certificate.

## **Subsidised driving lessons and practical driving competencies**

The major benefit of the DriveSafe NT program is the 10 subsidised driving lessons with a registered and qualified DriveSafe NT driving instructor.

Professional driving instructors will provide you with the on-road driving skills contained in the NT Road Users' Handbook (described as 'competencies'). Your driving instructor will 'sign-off' each competency as you successfully achieve them.

Electronic e-vouchers are issued to you in two stages and can be requested online, by SMS or over the telephone before each driving lesson.

Each driving lesson e-voucher has a value of \$50. Only one e-voucher may be used per calendar week (Monday to Sunday). You will need to pay the driving instructor for the top up between their usual fee and the DriveSafe NT subsidy.

Where additional lessons are required this would be a direct arrangement between you and the driving instructor.

We strongly encourage participants to practise the skills obtained with family and friends.



# DRIVESAFE NT PROGRAM STAGES

## 1. Enrolment

- Enrol and make a payment of \$110 at any MVR office by completing a DriveSafe NT enrolment form and learner licence application form. After you have your eyesight test and photo taken you will receive your DriveSafe NT Participant Pack.
- Confirmation of enrolment is sent via email/SMS after enrolment, this will include your PIN.
- Log in to DriveSafe NT Online at [www.drivesafe.nt.gov.au](http://www.drivesafe.nt.gov.au) and book into a Drive 1 theory class.

## 2. Drive 1 theory class/learner licence

- Attend Drive 1 theory class. The Driver Knowledge Test (DKT) is undertaken and assessed at the end of the class.
- Even if you already have a learner licence you must complete the class to be able to move onto the next stage of the program. You will be exempt from the DKT if you show a valid learner licence to your facilitator.

- After passing the DKT, your new learner licence will be mailed to you.

## 3. Five subsidised driving lesson e-vouchers

- You are now eligible to five subsidised driving lesson e-vouchers.

## 4. Driving lessons/supervised driving practise

- Start driving lessons with an approved and qualified DriveSafe NT driving instructor. Complete competencies 1-11 to be eligible to the Drive 2 theory class. Call your preferred instructor to book your lesson(s).
- Request your subsidised driving lesson e-vouchers (up to five) via SMS/online or freecall 1800 121 411 for assistance.
- If you have not achieved competencies 1-11 using the subsidised driving e-vouchers you will need to organise

and pay for any extra lessons directly with the driving instructor.

- Family and friends as supervising drivers play an important role in providing vital on-road experience for learner drivers. Logbooks are provided to assist.

## **5. Driver First Aid - St John Ambulance NT online first aid course**

- Complete Driver First Aid online at [driverfirstaid.org.au](http://driverfirstaid.org.au) before attending a Drive 2 theory class or provide a copy of your current first aid certificate.

## **6. Drive 2 theory class**

- After achieving competencies 1-11, log in to DriveSafe NT Online at [www.nt.gov.au/drivesafent](http://www.nt.gov.au/drivesafent) to book a Drive 2 theory class.
- Attend Drive 2 theory class, bring along a copy of your First@Scene certificate or current first aid certificate and take part in class discussions and activities.

## **7. Five subsidised lesson e-vouchers**

- You are now eligible to receive your next five subsidised driving lesson e-vouchers.

## **8. Continued driving lessons/ supervised driving practise**

- Continue driving lessons with your DriveSafe NT driving instructor to achieve competencies 12-23.
- Request your subsidised driving lesson e-vouchers via SMS/online or freecall 1800 121 411 for assistance.
- If you have not achieved the remaining competencies using the subsidised driving e-vouchers you will need to organise and pay for any extra lessons directly with the driving instructor.
- Continue driving practise with a supervising driver. A supervised driving hours log is provided to assist you record your driving experience.

## 9. Practical driving assessment/ provisional licence (Ps)

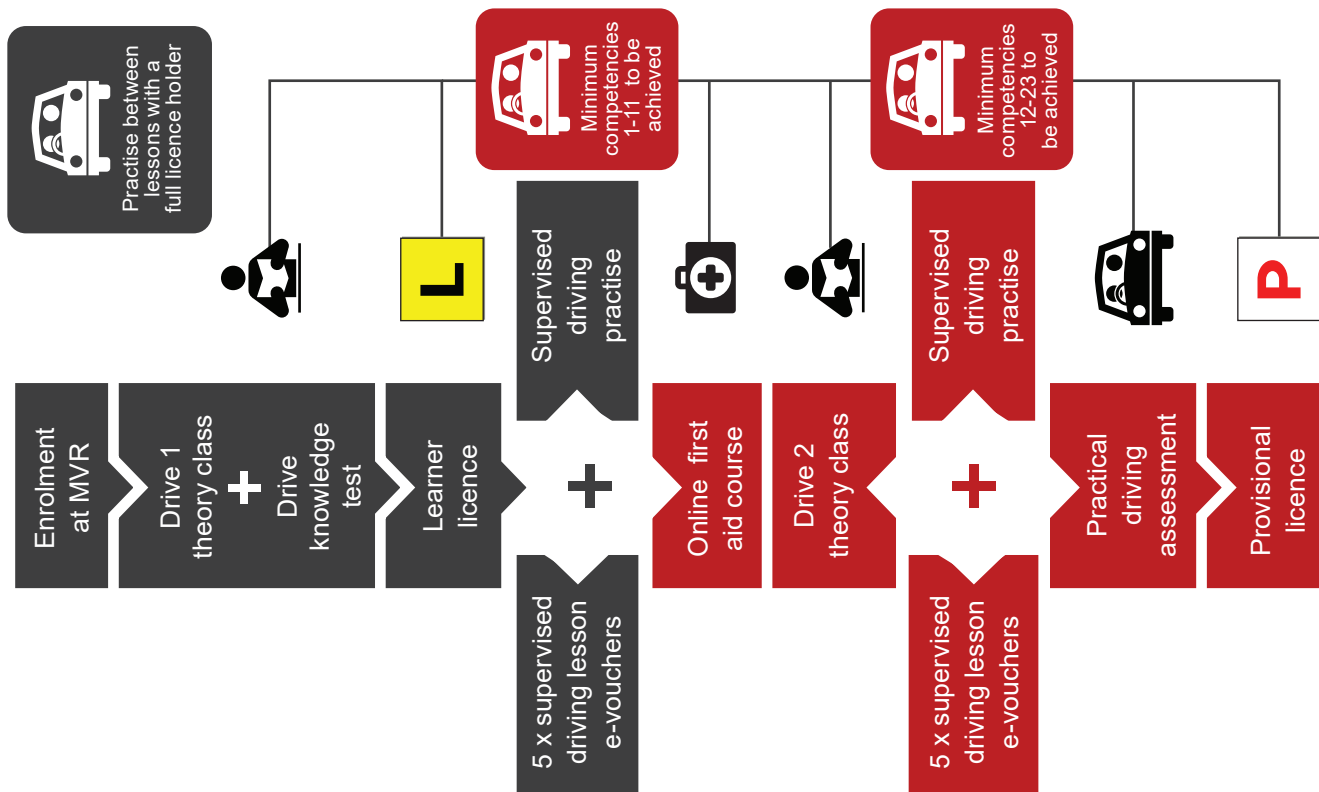
- Once you have achieved all 23 competencies and held your learner licence for a minimum of six continuous months you can book your practical driving assessment. Your test will be taken with an approved DriveSafe NT Driving assessor and may involve some car hire fees. On passing, your provisional licence will be mailed out to your postal address.

Territory P Plate drivers who maintain an unblemished driving record during their provisional licence period will be eligible to receive a FREE 10-year open class licence valued at \$170. Conditions apply.





# DRIVESAFE NT PROGRAM STAGES



# CODE OF CONDUCT

## 1. Introduction

Generally participants behave appropriately all or most of the time. However, poor conduct by some individuals can make driver education and training unpleasant for their colleagues, distract the instructor, result in damage to vehicles and facilities or, in extreme cases, put the individual, the instructor, other participants and other road users at serious risk.

To help ensure that DriveSafe NT participants behave safely and sensibly while undertaking the program, the Department of Infrastructure, Planning and Logistics has developed this Code of Conduct for DriveSafe NT participants.

## 2. What is the Code of Conduct?

The DriveSafe NT Participant Code of Conduct (the Code) is a set of guidelines for participants to follow when taking part in the DriveSafe NT program (the program). It forms the basis for the specific rules to manage behaviour during driver education and training, both in the classroom and on the road.

The Code also includes procedures for instructors to follow. For the purposes of the Code any reference to 'instructor' includes DriveSafe NT theory instructors, practical instructors and assessors.

## 3. To whom does it apply?

The Code applies to all participants enrolled in the DriveSafe NT program.

## 4. How does the Code benefit you?

The Code sets standards of behaviour and provides an agreed process so that disruptions or misconduct by participants are dealt with quickly and fairly. It also aims to minimise the number and severity of these disruptions.

The table at Section 5 lists some of the behaviours that are encouraged and those that are not allowed.



## 5. What are the standards?

For most participants, complying with the Code will not require any change in their usual behaviour. By acting in accordance with the Code, participants will help to ensure that all participants have a safe, pleasant and informative experience in the DriveSafe NT program.

DriveSafe NT instructors must also abide by a Code of Conduct. The Code of Practice for Driving Instructors in the Northern Territory is available to view on the Department of Infrastructure, Planning and Logistics website and on request from any instructor.

To provide feedback on instructor behaviour, please contact DriveSafe NT in the first instance on telephone 1800 121 411 or email [drivesafent@nt.gov.au](mailto:drivesafent@nt.gov.au).

## BEHAVIOURAL STANDARDS – IN THE CLASSROOM

Behaviour	Examples of how to meet the Code of Conduct
Respect other people and property	<ul style="list-style-type: none"> <li>• Treat other people and their possessions with respect.</li> <li>• Follow the instructor's directions and instructions without argument.</li> <li>• Do not interfere with property or equipment owned by the venue, instructor or DriveSafe NT by marking, removing or damaging them.</li> </ul>
While participating in the program, conduct yourself in a safe and orderly manner	<p><b>Participants must:</b></p> <ul style="list-style-type: none"> <li>• follow the instructor's directions and instructions.</li> </ul> <p><b>Participants must not:</b></p> <ul style="list-style-type: none"> <li>• smoke</li> <li>• use mobile phones, listen to music or read materials not related to the class</li> <li>• be under the influence of alcohol or other drugs</li> <li>• bully, harass or intimidate other participants or instructors – if an incident occurs, inform the instructor as soon as practicable</li> <li>• carry dangerous items (such as knives, etc.)</li> <li>• vandalise the property of the instructor, the venue, other participants or DriveSafe NT</li> <li>• interfere with emergency exits or switches unless instructed to do so</li> <li>• fight, spit or use offensive language.</li> </ul>
In case of an emergency	<ul style="list-style-type: none"> <li>• Follow the instructor's directions and instructions.</li> <li>• Wait in the area indicated by the instructor.</li> </ul>

## BEHAVIOURAL STANDARDS – IN A CAR / DRIVING LESSON

Behaviour	Examples of how to meet the Code of Conduct
Respect other people and property	<ul style="list-style-type: none"> <li>• Treat other people and their possessions with respect.</li> <li>• Follow the instructor's directions and instructions without argument.</li> <li>• When in a driving lesson, do not interfere with property, equipment or vehicles owned by the instructor or DriveSafe NT by marking, removing or damaging them.</li> </ul>
While participating in the program, conduct yourself in a safe and orderly manner	<p><b>Participants must:</b></p> <ul style="list-style-type: none"> <li>• follow the instructor's directions and instructions</li> <li>• drive safely and obey the road rules.</li> </ul> <p><b>Participants must not:</b></p> <ul style="list-style-type: none"> <li>• smoke</li> <li>• use a mobile phone</li> <li>• be under the influence of alcohol or other drugs</li> <li>• bully, harass or intimidate instructors</li> <li>• carry dangerous items (such as knives, etc.)</li> <li>• vandalise instructor or DriveSafe NT property or vehicles</li> <li>• deliberately drive in an unsafe or illegal manner</li> <li>• interfere with the driving controls or switches unless instructed to do so</li> <li>• use offensive language.</li> </ul>
In case of an emergency	<ul style="list-style-type: none"> <li>• Follow the instructor's directions and instructions.</li> <li>• Wait in the area indicated by the instructor.</li> </ul>

## 6. Participant responsibilities and consequences

### 6.1 What happens if a participant does not comply with the Code?

To promote consistency and fairness in responding to a participant who does not follow the Code, misconduct has been divided into three categories of seriousness.

There are various actions that may be taken if a participant does not follow the Code. These range from a warning, removal from the DriveSafe NT program or possible civil or police action.

The following factors will be taken into consideration when categorising the breaches of the Code:

- the threat to the safety of participants, the instructor and other road users
- the seriousness of the breach
- whether the breach was the first or one of a series of incidents about which the participant had been previously cautioned.

Refer to the procedures for managing misconduct of DriveSafe NT participants in each category below.

Note: The participant's parent or guardian will be informed and will have the opportunity to be involved in the decision-making process in cases where the participant is under 18 years of age and the suggested action includes removal from the DriveSafe NT program or possible civil or police action.

#### 6.1.1 Category 1 – Nuisance and offensive behaviour

Category 1 includes but is not limited to the following.

- At any time while participating in DriveSafe NT:
  - using offensive body language or language (i.e. swearing or racist language).
- While participating in DriveSafe NT theory classes (including before and after the classes and during any breaks):
  - disrupting the efficient running of classes by persistent noise (i.e. yelling and shouting or talking over the instructor)
  - group misconduct (i.e. yelling and shouting, throwing objects, etc.).

Such behaviour will result initially in a written warning being forwarded to the participant and to DriveSafe NT by the instructor.

Repeated offences may lead to removal of the participant from the DriveSafe NT program.

### **6.1.2 Category 2 – Dangerous behaviour**

Category 2 includes but is not limited to the following.

- At any time while participating in DriveSafe NT:
  - distracting the instructor by persistent noise (i.e. yelling and shouting)
  - spitting
  - refusing to obey reasonable instructions from the instructor
  - verbally threatening the instructor or other participants.
- While participating in DriveSafe NT theory classes (including before and after the classes and during any breaks):
  - bullying, harassment and intimidation of other participants
  - damaging other participants' property.

Such behaviour may result, with no warnings given, in removal of the participant from the current lesson/class.

### **6.1.3 Category 3 – Very destructive and dangerous behaviour**

Category 3 includes but is not limited to the following.

- At any time while participating in DriveSafe NT:
  - being under the influence of alcohol or other drugs
  - fighting
  - carrying dangerous items (i.e. knives, etc.)
  - physically attacking the instructor or other participants.
- While participating in DriveSafe NT theory classes (including before and after the classes and during any breaks):
  - deliberately interfering with emergency exits or switches.
- While participating in DriveSafe NT practical lessons (including before and after the lesson and during any breaks):
  - deliberately driving in an unsafe or illegal manner
  - deliberately interfering with the driving controls or switches
  - destruction of property or equipment owned by the instructor or DriveSafe NT.

Such behaviour will result, with no warnings given, in an immediate suspension from the DriveSafe NT program while decisions are made by DriveSafe NT about the duration of a longer-term ban, or possible civil or police action.

## 6.2 Repeat offenders

Where a participant is a repeat offender (more than one reported incident), the Department of Infrastructure, Planning and Logistics' Senior DriveSafe NT Program Officer or his/her representative will meet with the instructor(s) and participant to review the appropriateness of permanent removal from the program.

DriveSafe NT may need to consider if the participant's return to the program is conditional on the participant signing a written conduct management agreement setting out conditions for participation in the program. A breach of this agreement would result in immediate removal from the program.

## 7. Instructor responsibilities

Instructors are responsible for the general operation of the class and/or practical driving lesson including:

- reminding participants of behavioural standards at the beginning of any class or practical driving lesson
- providing information at the beginning of any class or practical driving lesson about evacuation and emergency procedures
- behaving and driving in a safe manner and taking reasonable care for the safety of all participants
- complying with all requirements of the relevant legislation, the DriveSafe NT Conditions of Registration for Instructors, the Code of Practice for Driving Instructors in the Northern Territory and this Code
- treating all participants with respect
- providing reasonable directions to ensure the safety of participants
- contacting the Department of Infrastructure, Planning and Logistics for clarification of correct procedures if there is any uncertainty in relation to participant conduct.

When a participant breaches the Code of Conduct the instructor shall:

- advise the participant that their behaviour is inappropriate
- advise the participant that they will be reported to DriveSafe NT and their conduct investigated
- record the incident and pass this information on to DriveSafe NT, which will then make a determination of the appropriate action.



### **7.1 Participant not to be removed from a practical driving lesson for misconduct**

Instructors should not remove a participant who misbehaves from a practical driving lesson while en route.

However, where the instructor holds a reasonable belief that a participant constitutes or is likely to constitute an immediate danger to the health, safety or wellbeing of the participant or any other person, the instructor may:

- stop the lesson, assume control of the vehicle and return the participant to their pre-arranged drop-off location or other safe location agreed to by both parties
- stop the lesson and arrange for the participant to be removed and placed in the care of police
- stop the lesson and call for assistance and/or an ambulance if there is a health problem.

## **8 DriveSafe NT's responsibilities**

DriveSafe NT has responsibility for developing and distributing the Code.

DriveSafe NT has responsibility for providing advice and ultimate decision making in relation to breaches of the Code.

## **9 Fair processes**

A participant will only be refused further participation in the program after the instructor has informed DriveSafe NT in line with the procedures for managing misconduct of DriveSafe NT participants.

If a participant has any questions about decisions taken by instructors in responding to breaches of the Code, they should take the matter to the instructor concerned. If the participant remains dissatisfied with the instructor's decision, they may contact DriveSafe NT and request a review of the decision.

Instructors should note that DriveSafe NT may issue advice that an instructor's decision to refuse further participation in the program to a participant be deferred while the matter is being investigated in consultation with stakeholders. The instructors must follow this advice.

## **10 Review process**

The Code will be reviewed as required and on an annual basis.

# PRACTICAL DRIVING COMPETENCIES

## About Practical Driving Competencies

There are 23 Practical Driving Competencies that are designed to provide you with basic on-road driving skills.

### Signing off competencies

To achieve a competency you must be able to demonstrate the requirements of the competency unaided in its entirety. In some cases you will need to demonstrate the competency a number of times during a lesson.

A competency cannot be completed during a lesson where you have received help in completing that competency.

To be eligible to undertake a D2 theory, competencies 1 to 11 must be signed off by a DriveSafe NT registered driving instructor prior.

All 23 need to be completed **and you must** have held your learner licence for a minimum continuous period of six months prior attempting the practical driving assessment.

## Self-assessment

Under (or beside) each competency in this handbook is space for you, your driving instructor or supervising driver to make notes or keep track of how you are going with each of the competencies.

This notes section is not compulsory but can provide a useful reference for you and your supervising driver to help make sure that you have practised each of the competencies in a range of conditions and situations.



## Competency No. 1: Vehicle controls

### Performance

The learner driver locates, identifies and describes the function and operation of all vehicle controls, gauges and warning lights.

### Conditions

- Vehicle parked and secured in a low level traffic area
- Engine not running.

### Requirements

The learner driver will locate, identify and describe the function or demonstrate operation of the following controls (where applicable):

1. Ignition switch
2. Steering lock
3. Indicators
4. Hazard lights
5. Washers/wipers
6. Warning lights/gauges/buzzers
7. Accelerator
8. Clutch pedal (if applicable)
9. Foot brake
10. Foot bracing point
11. Park brake
12. Gear positions
13. Steering wheel adjustments
14. Horn
15. Air-conditioning system
16. Heating system
17. Demisting system (front and rear)
18. All lighting controls (including high/low beam control)
19. All door controls
20. Other controls fitted  
(e.g. cruise control, bonnet release, central locking, electric mirror operation and/or special modifications).



## NOTES

.....

.....

.....

.....

.....

.....

.....

.....

.....

.....

.....

.....

.....

## Competency No. 2 Cabin drill

### Performance

The learner driver carries out adjustments required to ensure safe, effective and comfortable operation of the vehicle.

### Conditions

- Seat and mirrors to be incorrectly adjusted prior to assessment
- Vehicle parked and secured
- Engine not running
- Learner driver in driver's seat.

### Requirements

The learner driver will ensure that:

1. The vehicle is parked and park brake applied
2. Adjust seat, head restraint and steering wheel
3. Adjust all mirrors
4. The seat belts are secured for all occupants
5. All doors are closed.





## NOTES

.....

.....

.....

.....

.....

.....

.....

.....

.....

.....

.....

.....

.....

## Competency No. 3 Starting up procedure/shutdown

### Performance

The learner driver demonstrates correct starting up and shutdown procedure.

### Conditions

- In typical driving situations.

### Requirements (Starting up)

The learner driver will demonstrate:

1. The vehicle is secured (park brake applied)
2. Clutch pedal is fully depressed (if applicable)
3. Brake pedal is depressed
4. The gear lever is in Neutral for Manual transmission, or Park or Neutral for automatic transmission
5. Ignition is turned on
6. All warning lights/gauges are monitored
7. The vehicle is started
8. Re-checking warning lights/gauges for possible faults.

### Requirements (Shutdown)

The learner driver will demonstrate:

1. The vehicle parked off road
2. Park brake applied
3. Select Neutral (manual) or Park (automatic)
4. Release clutch and brake pedal (check for rolling)
5. Turn ignition off
6. Place into 1<sup>st</sup> gear/reverse gear (manual)



## NOTES

.....

.....

.....

.....

.....

.....

.....

.....

.....

.....

.....

.....

.....

## Competency No. 4: Moving off procedure

### Performance

The learner driver demonstrates moving off from a stationary position safely, efficiently and while maintaining full control of the vehicle.

### Conditions

- Vehicle parked adjacent to kerb in a low level traffic area, preferably free of parked cars, with engine running and park brake on
- Stationary from an intersection hold line with park brake applied.

### Requirements

The learner driver will demonstrate:

1. Check park brake is applied (auto or manual)
2. Foot brake is to be applied (auto or manual)
3. The clutch is depressed (if applicable)
4. The correct gear is selected (auto or manual)
5. Mirror use and checking for any hazard around vehicle
6. Appropriate indication is used
7. Park brake is released, on all occasions (auto or manual)
8. Check mirrors and blindspot (performed and re-checked as applied)
9. Clutch is released (if applicable)
10. Mirror use and checking for any hazard around vehicle
11. Smooth acceleration is applied, move off
12. Indicators are cancelled (if required)
13. Gear selection
14. No traffic is obstructed.



## NOTES

.....

.....

.....

.....

.....

.....

.....

.....

.....

.....

.....

.....

.....

## Competency No. 5: Gear changing

### Performance

The learner driver demonstrates smooth, efficient gear changing and gear selection according to road and traffic conditions, speed and vehicle requirements.

### Conditions

- Road and traffic conditions allowing speeds up to posted speed limit
- Intersections requiring stopping, slowing or turning
- On steep hills (ascending and descending).

### Requirements

The learner driver will demonstrate:

#### Manual:

1. Gear changes that are smooth and efficient
2. Selection of the appropriate gear
3. Not coasting in Neutral or in gear with the clutch depressed
4. Using a foot bracing point (where fitted) between gear changes (do not rest foot on clutch pedal).

#### Automatic:

1. Use of transmission kick down (to move to a lower gear automatically)
2. Use of appropriate gears to help maintain vehicle speed and control while descending a hill
3. Use of electronic overdrive (where fitted).





## NOTES

.....

.....

.....

.....

.....

.....

.....

.....

.....

.....

.....

.....

.....

## Competency No. 6: Steering control (forward and reverse)

### Performance

The learner driver demonstrates smooth, efficient steering control.

### Conditions

- Kerbed road (or road with clearly defined edges or edge markings)
- Sections of straight and sweeping curves, in low level traffic area with intersections.

### Requirements (forward)

The learner driver will demonstrate:

1. Keeping both hands on the steering wheel except when operating vehicle controls (i.e. changing gears)
2. 'Ten to two' or 'quarter to three' hand position
3. Smooth steering technique using push-pull method (limited hand-over-hand may be acceptable during slow manoeuvres)
4. Maintaining a steady course on straight and curved roads with no erratic steering corrections and not over or under correcting steering movements
5. Maintaining control while entering, or leaving, slip lanes, turns and parked positions.
6. Maintaining control while entering, or leaving, slip lanes, turns and parked positions.

### Requirements (reverse)

1. Reverse vehicle in a straight line, maintaining a consistent gap to the side of road
2. Reverse vehicle around a corner of 90 degrees.
3. Monitor all directions for hazards consistently.



## NOTES

.....

.....

.....

.....

.....

.....

.....

.....

.....

.....

.....

.....

.....

## Competency No. 7 Turns, left and right

### Performance

The learner driver demonstrates safe, efficient and legal road position during left and right turns at intersections.

### Conditions

Driving on roads with traffic and intersections with the following turn conditions:

- From a single lane or no marked lane road onto another road
- Onto a double/triple marked lane road from another road
- From a double/triple marked lane road onto another road
- From a double/triple marked lane road onto another double/triple marked lane road.

### Requirements

The learner driver will demonstrate:

1. Mirror use - consistently check all mirrors for hazard
2. Appropriate indication, including entering roundabouts
3. Indication when exiting roundabouts (where applicable)
4. Monitoring for other road users behind, beside and in front of the vehicle
5. Selection of the appropriate turn lane or roundabout entry lane
6. Staying within the turn lane boundaries
7. Appropriate speed and gear selection on approach, during the turn and upon exiting the turn
8. Selecting an appropriate gap in the traffic
9. Adopting a lane as near as practicable to the boundary of the carriageway
10. Exiting into a lane or unmarked carriageway with due regard for traffic, parked vehicles or an upcoming turn
11. Exiting into the appropriate corresponding lane or as directed by road markings (where applicable)
12. Continually re-checking mirrors throughout the operation
13. Ability to follow a steady controlled course throughout the turn.
13. Cancel indicators (if required)



## NOTES

.....

.....

.....

.....

.....

.....

.....

.....

.....

.....

.....

.....

.....

## Competency No. 8: Speed control

### Performance

The learner driver demonstrates good speed control at safe and legal speeds while maintaining a safe following distance.

### Conditions

- Roads with varying speed zones ranging from 40 km/h to 100 km/h
- Medium level traffic, allowing travel at or close to the posted speed limit.

### Requirements

*Note: Learner drivers may only exceed 80 km/h supervised by a licensed driving instructor.*

- 40 km/h zones (if available)
- 70 km/h zones (if available)
- 40 km/h school zones (school zone conditions to be replicated if conducted outside school hours)
- 50 km/h zones OR 60 km/h zones
- 80 km/h zones
- 90 km/h zone OR 100 km/h (or higher) zone.

The learner driver will demonstrate:

1. Driving at a safe and appropriate speed for the road and traffic conditions
2. Not exceeding the speed limit
3. Not unnecessarily slowing other traffic
4. Ability and confidence to drive close to or at the speed limit when safe to do so
5. Adopt and maintain a safe following distance (3 second rule)
6. Good observation at all times.



## NOTES

.....

.....

.....

.....

.....

.....

.....

.....

.....

.....

.....

.....

.....

## Competency No. 9 Slowing procedure

### Performance

The learner driver demonstrates controlled and safe slowing procedure.

### Conditions

Varying road conditions with traffic.

### Requirements

*Notes: Left-foot braking is not acceptable at any time.*

*Use of gears to slow the vehicle is not permitted; however, progressive downshifting can occur provided the vehicle's engine does not actively slow the vehicle.*

The learner driver will demonstrate:

1. Appropriate and consistent mirror use.
2. Indication (if applicable)

3. Smooth and even slowing
4. Progressive braking
5. Maintaining full control of the vehicle
6. Not skidding or slewing
7. Appropriate steering line
8. Appropriate gear selection
9. Re-checking mirrors.





## NOTES

.....

.....

.....

.....

.....

.....

.....

.....

.....

.....

.....

.....

.....

## Competency No. 10 Stopping procedure

### Performance

The learner driver demonstrates controlled braking to a safe stop.

### Conditions

- Varying road conditions with traffic
- Recognised stopping points (power pole, tree, traffic lights, stop sign, etc).

### Requirements

*Note: Left-foot braking is not acceptable at any time.*

The learner driver will demonstrate:

1. Appropriate and consistent mirror use
2. Indication (if applicable)
3. Smooth and even slowing
4. Progressive braking
5. Maintaining full control of the vehicle
6. Not skidding or sliding
7. Maintain consistent steering line
8. Stopping at a nominated point (e.g. hold line, power pole or tree)
9. Not stalling or labouring the vehicle
10. Not depressing the clutch too early (manual)
11. Not selecting neutral while vehicle is in motion
12. Re-checking mirrors
13. Bring vehicle to a complete stop
14. Apply park brake (prolonged stops only).



## NOTES

.....

.....

.....

.....

.....

.....

.....

.....

.....

.....

.....

.....

.....

## Competency No. 11 Hill starts

### Performance

The learner driver demonstrates controlled, smooth moving off, without stalling.

### Conditions

Vehicle parked on incline, adjacent to kerb in low traffic area, with park brake applied.

### Requirements

The learner driver will safely demonstrate controlled, smooth moving off from a parked position on an ascending road with a minimum 1 in 10 gradient.

The learner driver will demonstrate:

1. Park brake applied correctly
2. Appropriate and consistent mirror use (check safe distance from hazards)
3. Indicate (if required)
4. Depress brake pedals and clutch (manual) Brake pedal (automatic)
5. Select 1st gear (manual) Drive (auto)
6. Park brake held on with button depressed (if applicable)
7. Appropriate and consistent mirror use (including shoulder check for blind spots)
8. Head and eyes to front (direction of travel)
9. Perform moving off procedure (release clutch to friction point, gentle throttle, release)
10. Appropriate and consistent mirror use
11. Cancel indicator if on.

*Learner driver will be able to move off completely and safely on any incline under full control of the vehicle without stalling or rolling backwards.*



## NOTES

.....

.....

.....

.....

.....

.....

.....

.....

.....

.....

.....

.....

.....

## Competency No. 12 Give way rules

### Performance

The learner driver demonstrates compliance with the give way rules and drives safely and efficiently through intersections and crossings controlled by traffic lights and regulatory signs.

### Conditions

Roads with limited traffic containing intersections and crossings including traffic lights, stop signs, give way signs, pedestrian/children's crossings, roundabouts and turning across uncontrolled oncoming traffic.

### Requirements

The learner driver will demonstrate driving safely and efficiently through controlled and uncontrolled intersections. These must include:

- Traffic lights
- Stop signs
- Give way signs
- Pedestrian/children's crossings
- Roundabouts
- Turns across uncontrolled oncoming traffic.

The learner driver will demonstrate:

1. When required to stop (stop signs or red traffic lights), stopping as near as practical to hold lines without any part of the vehicle crossing them.
2. When a complete stop is not required (give way signs, green traffic lights, etc), approaching at an appropriate speed, slowing, anticipating and being prepared to stop if required.
3. Full understanding of give way rules.
4. Not unnecessarily delaying or obstructing other road users
5. Driving in accordance with all road rules.



## NOTES

.....

.....

.....

.....

.....

.....

.....

.....

.....

.....

.....

.....

.....

## Competency No. 13 Reversing

### Performance

The learner driver demonstrates safe and accurate reversing parallel to a kerb.

### Conditions

- Straight level road with kerb and free of parked vehicles or other obstructions
- Non-traffic or low level traffic area
- Clear of pedestrian activity.

### Requirements

The learner driver demonstrates safe and accurate reversing along the kerb for a minimum of 25 metres.

The learner driver will demonstrate:

1. Observation for traffic including mirror use, scanning and looking to the rear.
2. No wheel will touch the kerb.
3. Both kerbside wheels will be within half a metre (500 mm) of the kerb at all times.
4. No forward adjustments.





## NOTES

.....

.....

.....

.....

.....

.....

.....

.....

.....

.....

.....

.....

.....

## Competency No. 14a Right-angle parking (front in)

### Performance

The learner driver demonstrates safe and accurate parking between two vehicles parked at a right angle to the kerb, then leaves the parked position to face the opposite direction to that of entry. No part of the vehicle may strike another object or impinge on another parking bay.

### Conditions

- Right angle parking space with vehicles in parking spaces either side of the vacant space.
- Where limited parking options are available, a minimum of 1 vehicle adjacent to the vacant parking space can be accepted.

### Requirements

The learner driver will select an appropriate area and safely park nose to kerb between 2 vehicles at right angles to the kerb without striking any other vehicle, any person, animal or object including a kerb, gutter, parking meter or sign, and complete the parking manoeuvre in a reasonable time.

The learner driver will demonstrate:

1. Select suitable parking space/bay
2. Appropriate and consistent mirror use
3. Correct indication
4. Appropriate speed

5. Appropriate steering
6. Parking the vehicle completely in the bay and securing the vehicle (including applying park brake)
7. Scanning continually when reversing out of the bay
8. Not obstructing other traffic unduly
9. Reversing out of the parking bay to face the opposite direction to that of entry
10. Appropriate and consistent mirror use
11. Minimum steering correction required to move off
12. Steering movement to only occur while the vehicle is in motion.



## NOTES

.....

.....

.....

.....

.....

.....

.....

.....

.....

.....

.....

.....

.....

## Competency No. 14b Right-angle parking (reverse)

### Performance

The learner driver demonstrates safe and accurate parking between two vehicles parked at a right angle to the kerb, then leaves the parked position to face the opposite direction to that of entry. No part of the vehicle may strike another object or impinge on another parking bay.

### Conditions

- Right angle parking space with vehicles in parking spaces either side of the vacant space.
- Where limited parking options are available, a minimum of 1 vehicle adjacent to the vacant parking space can be accepted.

1. Select suitable parking bay
2. Appropriate and consistent mirror use
3. Appropriate indicator use
4. Appropriate gear selection
5. Monitor all directions for hazards when moving
6. Appropriate steering
7. Park vehicle completely centered in parking bay
8. Select reverse gear
9. Check all clearance of other vehicles/hazards.
10. Turn steering wheel as sharply as possible to avoid extra movements
11. Before stopping to proceed forward, turn steering wheel in direction you wish to travel
12. Select 1<sup>st</sup> gear to move off smoothly
13. Appropriate and consistent mirror use



## NOTES

.....

.....

.....

.....

.....

.....

.....

.....

.....

.....

.....

.....

.....

## Competency No. 15 Reverse parallel parking

### Performance

The learner driver demonstrates safe and accurate reverse parallel parking.

### Conditions

- Straight, level, low traffic area clear of pedestrian activity
- Kerb or clearly defined straight sealed edge.

### Requirements

The instructor or learner driver will select an appropriate area and the learner driver will safely reverse park behind a vehicle parallel to the kerb without striking any other vehicle, any person, animal or object including a kerb, gutter, parking meter or sign, and complete the parking manoeuvre in a reasonable time.

The learner driver will demonstrate:

1. Appropriate and consistent mirror use
2. Correct indication
3. Observation for traffic and pedestrians with consistent mirror use, scanning and looking to the rear for hazards/shoulder check

4. Not reversing more than 3 metres behind the parked vehicle while manoeuvring (measured between the rear of the parked vehicle and the front of the vehicle being parked)
5. Reversing in one continual movement
6. Stopping the vehicle within 1 to 2 metres of the parked vehicle after reversing, the learner driver may straighten up in a forward motion if needed.
7. The left wheels are within 300mm of the kerb and in the straight ahead position
8. The vehicle is parallel to the kerb
9. The vehicle is safely secured, including park brake applied.

## NOTES

- 10. Appropriate and consistent mirror use before leaving parked position
- 11. Indication before leaving parked position
- 12. Blind-spot check before leaving parked position
- 13. Not obstructing traffic or pedestrians when leaving parked position
- 14. Steering movement to only occur while the vehicle is in motion.

*See diagram on page 84*

## Competency No. 16 U-turns

### Performance

The learner driver demonstrates completion of a safe and efficient U-turn using forward gears.

### Conditions

- Straight level road preferably with kerbed edges and clear of driveways
- Low level traffic area
- Road of appropriate width that the vehicle can readily complete the manoeuvre.

### Requirements

The learner driver will select an appropriate area and safely complete a minimum of 4 U-turns.

Two of the 4 U-turns must be on a wide road with kerbed edges and the remaining 2 can be any of the following:

- Through a median strip
- At an intersection
- At traffic lights (where permitted).

The learner driver will demonstrate:

1. Appropriate and consistent mirror use, correct indication and blind-spot check prior to the U-turn

2. Continual observation for hazards throughout the exercise
3. Turning the steering wheel only while in motion
4. Not hitting kerbs or objects
5. No reversing adjustments
6. Not obstructing traffic
7. Compliance with all road rules
8. Appropriate and consistent mirror use, correct indication (if required) and blind-spot check prior to re-joining traffic stream.





## NOTES

.....

.....

.....

.....

.....

.....

.....

.....

.....

.....

.....

.....

.....

## Competency No. 17 Turning around on the road – e.g. three-point turn

### Performance

The learner driver demonstrates safe and efficient turning around in the road, using forward and reverse gears.

### Conditions

- Straight level road with kerbed edges and clear of driveways
- Low level traffic area
- Road of appropriate width that the vehicle can readily complete the manoeuvre in 3 to 5 directional changes.

### Requirements

The learner driver will select an appropriate area and safely turn around in the road without striking any other object.

The learner driver will demonstrate:

1. Correct stopping procedure prior to commencing the exercise
2. Appropriate and consistent use of mirrors, indication and blind-spot check when commencing first forward turn
3. Continual scanning in all directions throughout the exercise
4. Completion of the manoeuvre in 3 to 5 directional changes within a reasonable time
5. An adequate turn in each movement
6. Turning the steering wheel only while in motion
7. Not using driveways or verges to assist
8. Not hitting or mounting a kerb or striking an object
9. Not obstructing traffic unnecessarily
10. Appropriate and consistent mirror check, blind-spot check and indication prior to moving off.



## NOTES

.....

.....

.....

.....

.....

.....

.....

.....

.....

.....

.....

.....

.....

## Competency No. 18 Lane changing, merging, forming one lane

### Performance

The learner driver demonstrates safe lane changing to the left and right, when merging, and when forming one lane.

*Note: Forming one lane is not a merge.*

### Conditions

Moderate traffic conditions on multi-lane roads.

### Requirements

The learner driver will safely change lanes, merge and form one lane. There will be:

- Right-hand lane changes
- Left-hand lane changes
- Merges (at 70 km/h or more)
- Form one lane
- Entering highways/multi-laned roads.

The learner driver will demonstrate:

1. Selecting the appropriate lane
2. Appropriate and consistent mirror use
3. Correct indication
4. Blind-spot check prior to lane change
5. Smooth controlled lane change
6. Cancelling indicator
7. Appropriate and consistent mirror use
8. No traffic obstruction
9. Adopting an appropriate safe speed.

*See diagram on page 87*



## NOTES

.....

.....

.....

.....

.....

.....

.....

.....

.....

.....

.....

.....

.....

## Competency No. 19 Overtaking

### Performance

The learner driver demonstrates safe overtaking of a vehicle travelling in the same direction on a single-lane road or multi-lane carriageway.

### Conditions

Suitable traffic conditions in a speed zone of 70 km/h or greater.

### Requirements

The learner driver will safely overtake a slower vehicle while still remaining within the posted speed limit.

The learner driver will demonstrate:

1. Checking if it is safe to overtake by scanning forward and rearward for hazards
2. Appropriate and consistent mirror use
3. Indication
4. Blind-spot check
5. Move smoothly into overtaking lane - past overtaken vehicle
6. Checking the overtaken vehicle is visible in the central mirror before moving back into lane
7. Appropriate and consistent mirror use, indication/blind-spot check back into lane
8. Appropriate speed before, during and after overtaking
9. Not obstructing traffic.



## NOTES

.....

.....

.....

.....

.....

.....

.....

.....

.....

.....

.....

.....

.....

## Competency No. 20 Observation skills, visual searching and scanning, hazard recognition

### Performance

The learner driver demonstrates continuous forward scanning and regular observation to the sides and rear of the vehicle.

The learner driver demonstrates appropriate behaviours in relation to an encounter with a motorcycle, cyclist, heavy vehicle and/or emergency vehicle.

### Conditions

Varying road and traffic conditions.

### Requirements

The learner driver will maintain continuous observation to the front, sides and rear of the vehicle.

#### Part 1:

The learner driver will demonstrate:

1. Continuous scanning to both the left and the right
2. Scanning short, middle and long distances, forward and rearward.
3. Appropriate and consistent mirror checks
4. Operating any controls required without diverting attention from road and traffic conditions
5. Correct response to any potential or real hazard

#### Part 2:

The learner driver will provide a 3–5 minute commentary while driving to demonstrate appropriate behaviours in relation to managing an encounter with:

1. Heavy vehicles and emergency vehicles
2. Vulnerable road users such as pedestrians, motorcycles and cyclists.





## NOTES

.....

.....

.....

.....

.....

.....

.....

.....

.....

.....

.....

.....

.....

## Competency No. 21 Compliance with the system of vehicle control

### Performance

The learner driver demonstrates consistency in the application of the system of vehicle control.

### Conditions

Roads with features requiring driver preparation – e.g. stop and give way signs, right and left turn intersections, lane changes, etc.

### Requirements

The learner driver will drive the vehicle continually using the system of vehicle control in the accepted sequence.

The learner driver will demonstrate:

1. Correct course selection (observing/deciding/selecting correct line of approach)
2. Appropriate and consistent mirror use
3. Indication (where required)
4. Braking (where required)
5. Appropriate gear selection
6. Appropriate and consistent mirror use
7. Correct evasive action (avoiding or negotiating a situation or hazard by stopping, turning, etc.)
8. Appropriate acceleration



## NOTES

.....

.....

.....

.....

.....

.....

.....

.....

.....

.....

.....

.....

.....

## Competency No. 22 Driving at night

### Performance

The learner driver demonstrates consistency in the application of all previously attained competencies during hours of darkness.

### Conditions

Varying road and traffic conditions in the hours of darkness (i.e. no earlier than official sunset plus 15 minutes or no later than official sunrise minus 15 minutes on any day).

### Requirements

The learner driver will maintain continuous effective observation to the front, sides and rear of the vehicle.

The learner driver will demonstrate:

1. Continuous scanning to both left and right
2. Scanning short, middle and long distances
3. Appropriate and consistent mirror checks
4. Appropriate use of lighting controls
5. Operating any controls without diverting attention from the road and traffic conditions
6. Correct response to any potential or real hazard
7. Appropriate crash avoidance space (3 second rule).



## NOTES

.....

.....

.....

.....

.....

.....

.....

.....

.....

.....

.....

.....

.....

## Competency No. 23 Driving on busy roads and unfamiliar roads

### Performance

The learner driver demonstrates safe, controlled and efficient driving on busy roads and unfamiliar roads.

### Conditions

Wide variety of different road and traffic situations.

### Requirements

The learner driver will drive the vehicle in heavy traffic flow conditions and unfamiliar areas.

The learner driver must negotiate:

- Stop signs
- Give way signs
- Traffic lights
- Pedestrian/children's crossings
- Right and left turns.

The learner driver will demonstrate:

1. Appropriate and consistent mirror checks
2. Efficient operation of all vehicle controls
3. Correct lane positions
4. Keeping to the left where appropriate

5. Safe following distances (3 second rule)
6. Driving at or close to the posted limit when safe to do so
7. Continual concentration and observation
8. Correct application of all road rules
9. Awareness of hazards/potential hazards
10. All elements of the system of driving and vehicle control in the correct order
11. All competencies negotiated to the required standard
12. Courtesy towards other road users.



## NOTES

.....

.....

.....

.....

.....

.....

.....

.....

.....

.....

.....

.....

.....

# DRIVING LOG

## Record of lessons with a supervising driver

The supervised driving log is your record of the driving practise you do with family and friends as well as lessons with a DriveSafe NT driving instructor.

Completing the supervised driving log is a great way to keep track of your number of hours' practise, as well as the conditions you have practised driving in.

Try to complete an entry in the log every time you drive, even if it's only a 5-minute drive to the shops. You might be surprised just how quickly those short trips add up to hours of practise.

## LEGEND

### Road conditions

MR – Major road / highway

U – Unsealed road

M – Minor road

### Driving conditions

#### Weather

F – Fine

S – Sunset/sunrise

R – Rain

#### Traffic density

L – Light

M – Medium

H – Heavy





## DRIVING LOG

Date	Start	Finish	Location	Vehicle - M / A	Vehicle Plate No.	Road



Weather	Traffic	Competencies and Comments	Licence No.	Name	Signature

## DRIVING LOG

Date	Start	Finish	Location	Vehicle - M / A	Vehicle Plate No.	Road



Weather	Traffic	Competencies and Comments	Licence No.	Name	Signature

## DRIVING LOG

Date	Start	Finish	Location	Vehicle - M / A	Vehicle Plate No.	Road



Weather	Traffic	Competencies and Comments	Licence No.	Name	Signature

## DRIVING LOG

Date	Start	Finish	Location	Vehicle - M / A	Vehicle Plate No.	Road



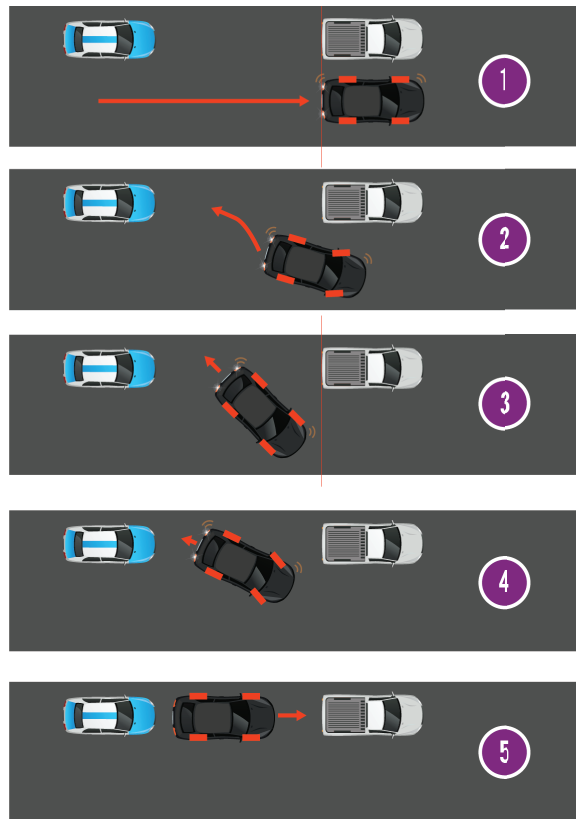


Weather	Traffic	Competencies and Comments	Licence No.	Name	Signature

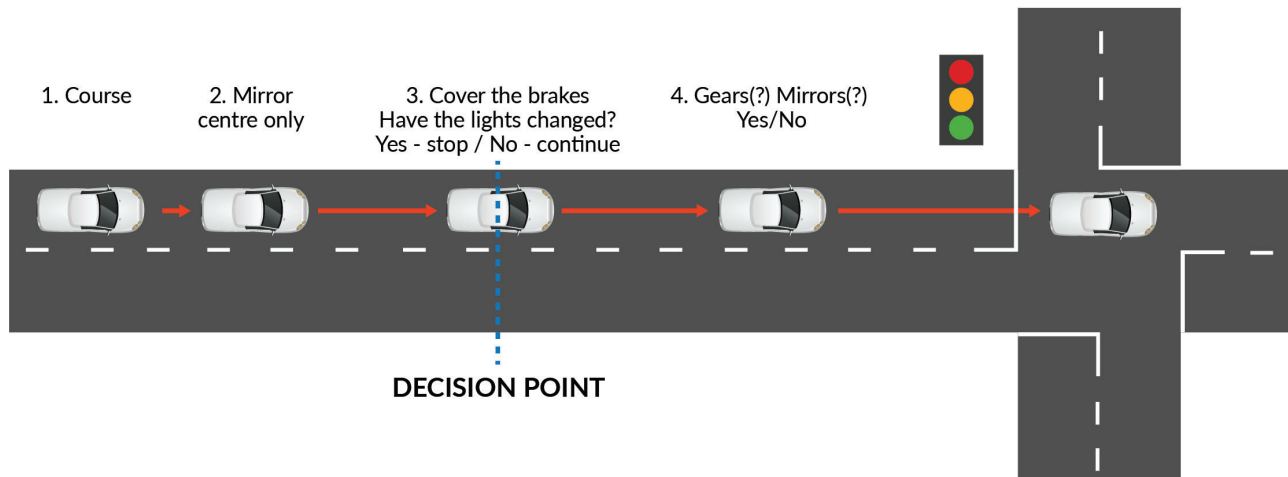




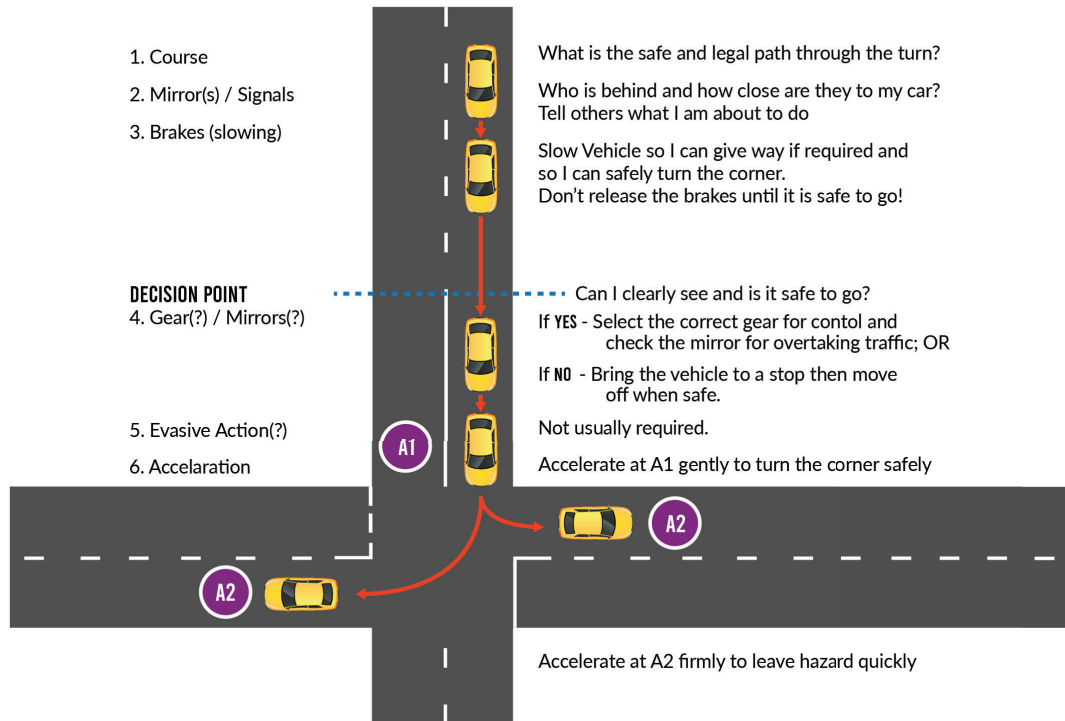
## Reverse parallel parking



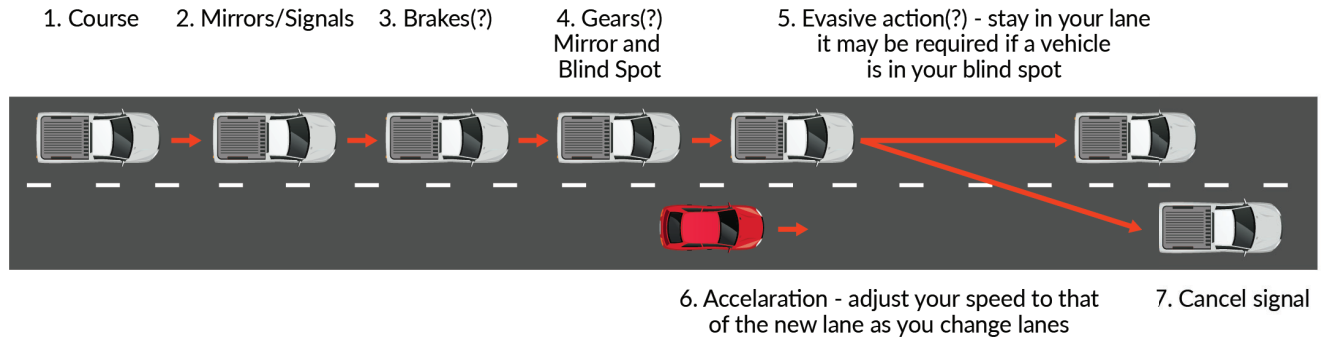
## Decision making when approaching traffic lights



## Decision making when turning at an intersection



## Lane changing, merging, forming one lane



**For more information contact:**  
**DriveSafe NT, Department of Infrastructure,**  
**Planning and Logistics**  
**Website: [www.drivesafe.nt.gov.au](http://www.drivesafe.nt.gov.au)**  
**Email: [drivesafent@nt.gov.au](mailto:drivesafent@nt.gov.au)**  
**Telephone: 1800 121 411**